





TERRAZZO

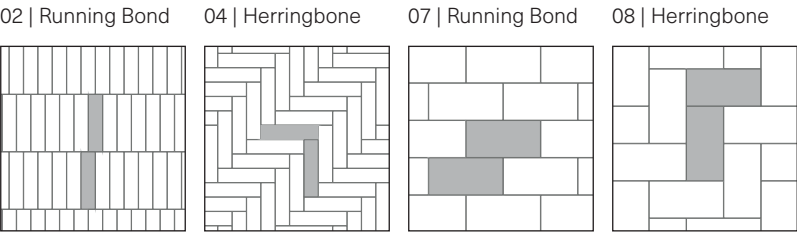
DESCRIPTION: Slab    TEXTURE: Polished



600×150				
Specifications per pallet		Imperial	Metric	
 108 units / pallet	Product dimension (L × W × H)		23 5⁄8 × 5 7⁄8 × 2 3⁄8	600 × 150 × 60
	Cubing		104.63 ft²	9.72 m²
	Approx. Weight		3 050 lbs	1 383 kg
	Number of rows		9	
	Coverage per row		11.63 ft²	1.08 m²
Lin. coverage per row	Width	5.91 lin. ft	1.80 lin. m	
	Length	23.62 lin. ft	7.20 lin. m	

600×300				
Specifications per pallet		Imperial	Metric	
 54 units / pallet	Product dimension (L × W × H)		23 5⁄8 × 11 13⁄16 × 2 3⁄8	600 × 300 × 60
	Cubing		104.63 ft²	9.72 m²
	Approx. Weight		2 969 lbs	1 347 kg
	Number of rows		9	
	Coverage per row		11.63 ft²	1.08 m²
Lin. coverage per row	Width	5.91 lin. ft	1.80 lin. m	
	Length	11.81 lin. ft	3.60 lin. m	

Laying Patterns Options



Patterns are for design inspiration only. The installer is responsible to calculate & purchase the correct amount of material.

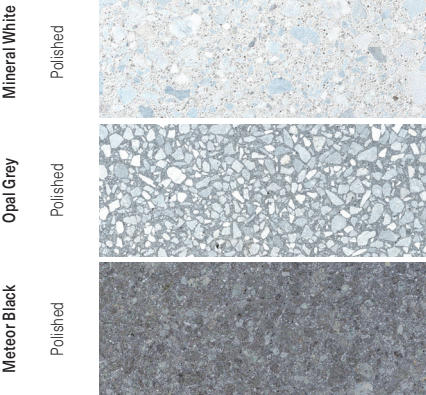
NOTES

\* The Terrazzo Collection comes with a factory-applied, water-based "natural look" protectant that enhances the surface and aids in maintenance. However, to maintain its de-icing salt resistant properties, it is essential to re-apply a concrete or natural stone water-based protectant or sealer periodically.

We recommend applying the protectant as soon as you observe water absorption. If water is still repelled, re-application is not yet necessary. Always test the protectant or sealer on a small, hidden area before full application.

Pallet Overview - 600×150	

Pallet Overview - 600×300	

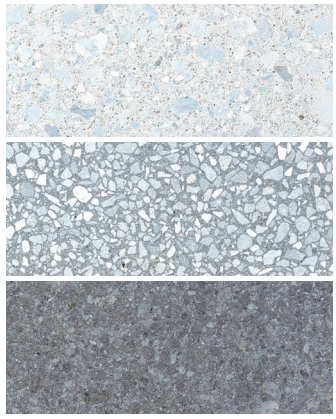




# TERRAZZO

**DESCRIPTION:** Slab **TEXTURE:** Polished

## Pallet Overview - 600×600



Polished  
Mineral White

Polished  
Opal Grey

Polished  
Meteor Black

## 600×600

### Specifications per pallet



18 units / pallet

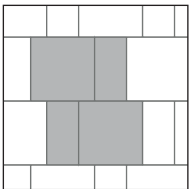
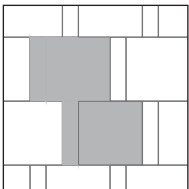
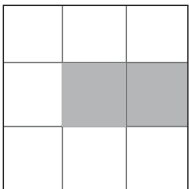
	Imperial	Metric
Product dimension (L × W × H)	23 5/8 × 23 5/8 × 2 3/8	600 × 600 × 60
Cubing	69.75 ft <sup>2</sup>	6.48 m <sup>2</sup>
Approx. Weight	2 060 lbs	934 kg
Number of rows	9	
Coverage per row	7.75 ft <sup>2</sup>	0.72 m <sup>2</sup>
Lin. coverage per row	3.94 lin. ft	1.20 lin. m

## Laying Patterns Options

09 | Stack Bond

12 | Linear pattern

13 | Linear pattern



Patterns are for design inspiration only. The installer is responsible to calculate & purchase the correct amount of material.

## NOTES

\* The Terrazzo Collection comes with a factory-applied, water-based "natural look" protectant that enhances the surface and aids in maintenance. However, to maintain its de-icing salt resistant properties, it is essential to re-apply a concrete or natural stone water-based protectant or sealer periodically.

We recommend applying the protectant as soon as you observe water absorption. If water is still repelled, re-application is not yet necessary. Always test the protectant or sealer on a small, hidden area before full application.

\*\*For this application, it is recommended that this product be installed on a concrete base as designed by a local Engineer.