

# PISA™ CLASSIC



GRANITE



MAHOGANY



NATURAL



SIERRA

## VISUAL APPEARANCE

The built-in setback design of PISA™ automatically forms the correct slope, ensuring a highly stable retaining wall. Utilizing the product's tapered components, you can form curved walls and steps. Classic tongue and groove for easy install.

## FINISH

Split / Rock-faced.

## PRODUCT SPECIFICATIONS



**STANDARD**  
12 x 8 x 6"  
300 x 200 x 150mm



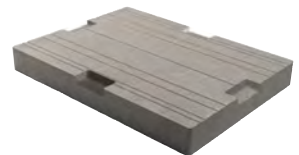
**TAPERED**  
12 x 8 x 6"  
300 x 200 x 150mm



**CORNER**  
12 x 8 x 6"  
300 x 200 x 150mm



**PISA COPING**  
12 x 24 x 3"  
300 x 600 x 75mm  
*See Steps, Treads & Coping section  
page 166 for more details*

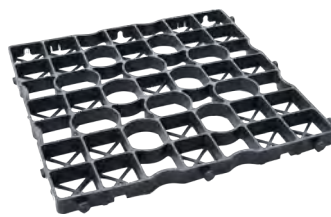


**U-GRIP™ BASE PAD**  
14 x 19 x 2"  
355 x 482 x 55mm

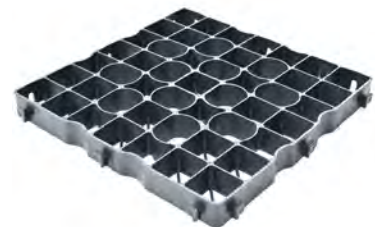


- Creates a revolutionary Reinforced Soil Structure (RSS) with high tensile and compressive strength to maximize the performance of pavement structures.
- Extremely permeable, long lasting, durable and environmentally friendly. Lightweight and easy to handle.
- Simple and quick installation.
- Allows for easy repairs / adjustments after installation.

See page 186-187 for more details.



**DRIVECEL30 LIGHT DUTY**  
20 x 20 x 1.2"  
500 x 500 x 30mm



**DRIVECEL50 HEAVY DUTY**  
20 x 20 x 2"  
500 x 500 x 50mm

\*Colour selection should be chosen from actual samples.

**TECHNICAL INFORMATION**

**ASTM C 1372 Standard Specifications for Dry-Cast Segmental Retaining Wall Units**

Conforms to:

- C140 for Absorption and Compressive Strength > 3000 PSI
- C1262 for Freeze Thaw Durability <1% mass loss
- C1372 Overall dimensional variations permissible for width, height and length +/-3 mm

**Unilock standards exceed 5,000 PSI for Pisa™ products with:**

- 4% absorption avg.
  - 5% absorption max.
  - Dimensional Accuracy +/-3 mm
- Test results available upon request*

**Meets the U.S. Architectural & Transportation Barrier Compliance Board Slip-Resistance Surfaces Advisory Guidelines**

**LEED INFORMATION**

**Materials & Resources: LEED V4:**

- Building Product Disclosure and Optimization
- Sourcing of Raw Materials - Sourcing of Raw Materials and Extraction • **1 point**
- Sourcing of Raw Materials - Leadership Extraction Practices • **1 point**
- Material Ingredient Reporting - Material Ingredient Reporting • **1 point**
- Material Ingredient Reporting - Material Ingredient Optimization • **1 point**
- Environmental Product Declaration • **1 point**

If required, summary test data shall be provided with the SRW Design and shall include:

- a) SRW Unit shear strength as per ASTM D6916
- b) SRW Unit - Geosynthetic Reinforcement connection strength as per ASTM D6638

**PRODUCT DATA**

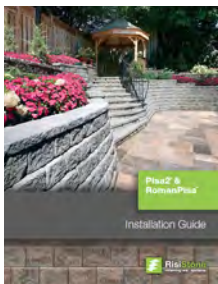
Stones & Bundling	Face Feet Per		Linear Feet Per		Units Per		Per Bundle		Lbs Per	
	Bundle	Unit	Bundle	Unit	Bundle	Face Feet	Layers	Sections	Unit	Bundle
<b>Gormley Manufacturing; U-Grip - Gormley Manufacturing</b>										
Standard - Pre Split - Single Piece	24.00	0.33	47.90	0.67	72	3.00	-	4	48	3,456
Tapered - Double Unit	20.00	0.67	40.00	1.33	30	1.50	-	2	93	2,775
Corner Unit - Double Unit	20.00	1.67	-	-	12	0.60	-	2	96	1,152
PISA Coping Unit - sold as a double unit	16.00	1.00	64.00	4.00	16	1.00	9	-	145	2,320
U-Grip Base Pad	-	-	85.39	1.58	54	-	9	-	46	2,500

Notes: Sold in full bundles or sections only. Maximum height – 36” (under optimum conditions) but can be engineered for walls that are required to be higher. Higher walls can be achieved using geogrid reinforcement. Tapered units will allow for a minimum 5ft. outside radius. Automatic setback is 3/4” per row. Engineering services are available. For more information, samples or custom options, please contact your Unilock Territory Manager or call 1-800-UNILOCK.

**APPLICATIONS**



For coping options, we recommend using Natural Stone, Universal Coping or Pisa2™ Coping.



Refer to the Pisa™ Installation Guide for more information.

<https://www.risistone.com/installation-guides/>

**RECOMMENDED ADHESIVE**



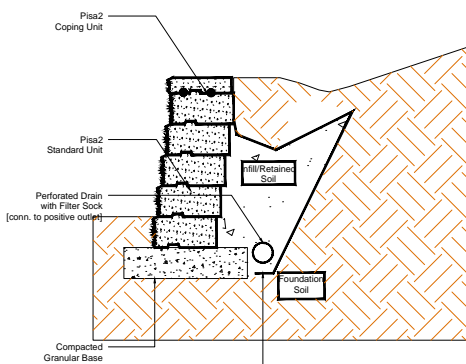
**Alliance Gator Block Bond XP**

- | VOC Compliant
- | Low odour- safe indoors or out
- | Fast curing- provides permanent overnight bond
- | Suitable for use in hot and cold environments
- | Non-shrinking- does not crack
- | Strong and versatile

Coverage: For 1/4” Bead (approx)

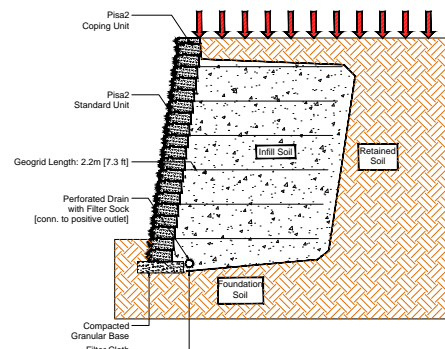
10 oz		28 oz	
m	ft.	m	ft.
-9	-31	-26	-86

**GRAVITY WALL SECTION**



Cross sections are examples, and must not be used for construction.

**GEOGRID WALL SECTION**



Cross sections are examples, and must not be used for construction.

WALLS | PISA2™

**RETAINING WALLS & VERTICAL FEATURES**